

# Artisan Link Pro

The consistent, easy and safety-focused choice for special stains



# A true walk-away solution for multiple special stains

Special stains present a unique challenge for many labs. With the numerous special stains possible, the qualified resources needed to perform them may not always be available. Manually performed special stains are often time-consuming and the results may be inconsistent, having a direct impact on the time to diagnosis and result certainty. Finally, the chemicals required for these stains can be a health hazard for lab staff, as well as an environmental hazard and a storage concern.

Artisan Link Pro is a unique special stains solution that addresses all of these needs and more. The system is optimized for staining of multiple protocols at the same time. It fully automates the staining process from drying and deparaffinization through to finished slides, to deliver consistent and easy special stains with lab-safety in mind.

## Consistent

Get truly exceptional staining consistency from standardized reagents and a reliable and fully automated instrument.

## Easy to use

Make special stains simple with an extensive menu of automated stains, protocol editing options, and an optimized workflow.

## Safety-focused

Minimized risk of exposure to hazardous fumes and chemicals and improved operator and environmental safety.



Color coding of bulk fluid and waste system for enhanced usability.

Intuitive user interface via medical grade touch screen and keyboard.

# The complete special stains solution enabling an enhanced workflow and ensuring high-quality results

The Artisan Link Pro Special Staining solution is designed to provide pathology labs with consistent staining results, added user safety and significantly improved productivity compared to manual processes. Automate your special stains with Artisan Link Pro and experience an easy and uncomplicated process while relying on consistent results, slide after slide.

Stain up to 48 slides using up to 50 reagent packs and multiple different protocols in one and the same run, allowing you to enhance productivity.

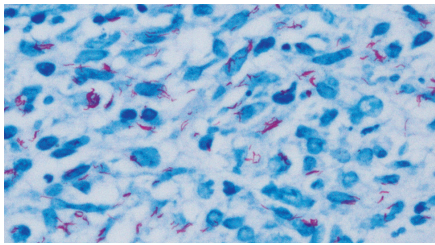
## Seamlessly connect Artisan Link Pro with your laboratory network and laboratory information system (LIS) to enhance workflow, save time and improve patient safety:

- **Monitor in real time** with full visibility of staining processes, easy editing of protocols, and reports printable from any workstation or PC that is also connected to the local area network
- **Send test requests directly from LIS** into the DakoLink software on Artisan Link Pro and eliminate the need for additional manual entry at the instrument
- **Use the same LIS-created barcode** throughout the entire sample workflow without relabeling, and know that slides are always uniquely identified and stained according to each request and matching patient cases

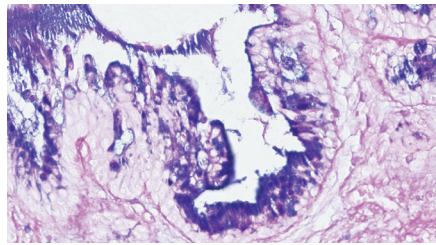
The solution requires minimal user intervention which helps save time, and allows the allocation of resources to other tasks in the lab. In addition, the system reduces exposure to hazardous chemicals by dispensing less volume of reagent per slide and generating very little waste.

With an extensive menu of ready-to-use stain kits and standardized, yet editable, protocols Artisan Link Pro automates even your most complex stains, considering user safety, excellent quality and reduced hands-on time for optimal performance and fast, accurate results to patients.

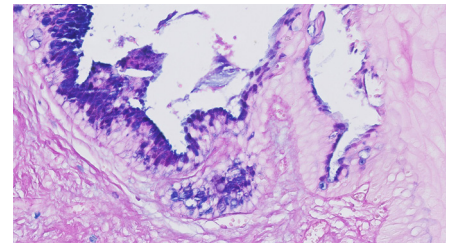
# Extensive menu of high-quality stain kits and staining protocols



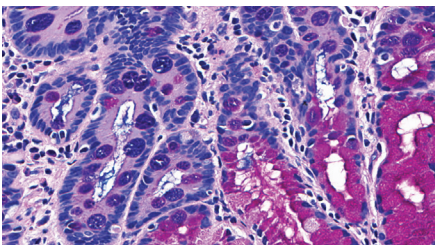
AFB



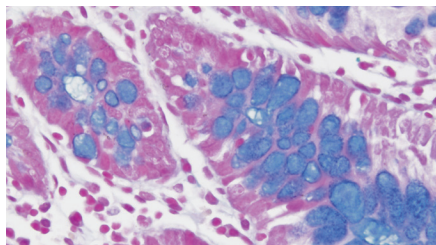
AB/PAS



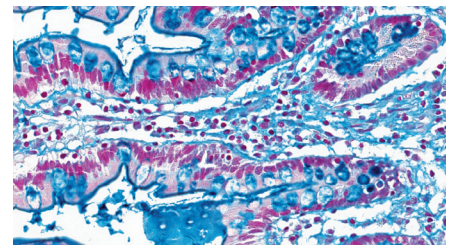
AB/PAS with Alpha-Amylase



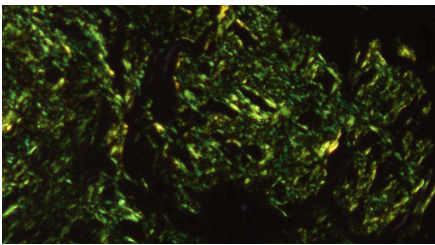
AB/PAS Hematoxylin



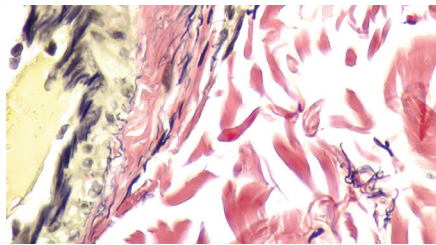
AB pH 2.5



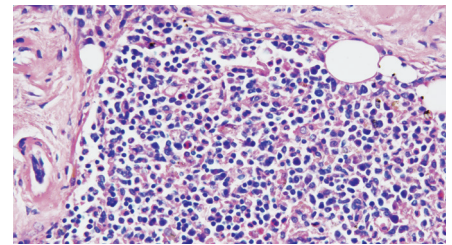
Colloidal Iron



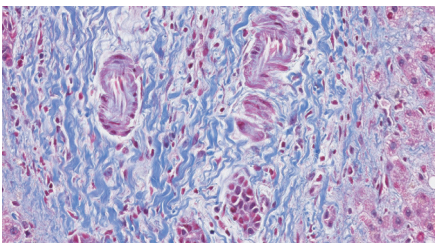
Congo Red



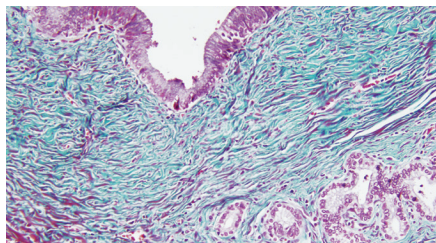
Elastic



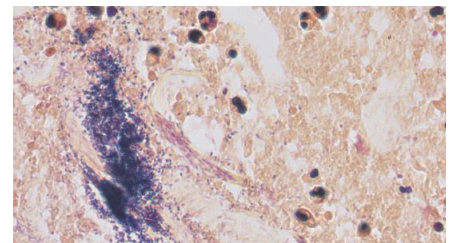
Giemsa



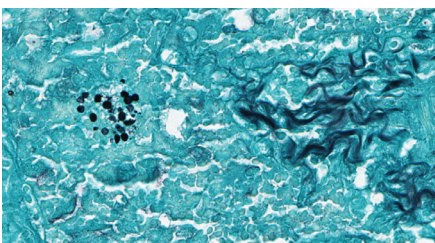
Gomori's Blue Trichrome\*



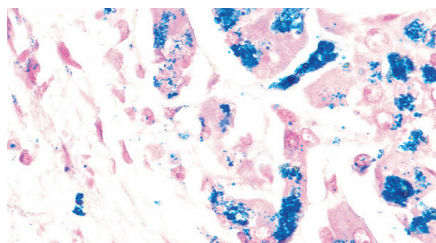
Gomori's Green Trichrome



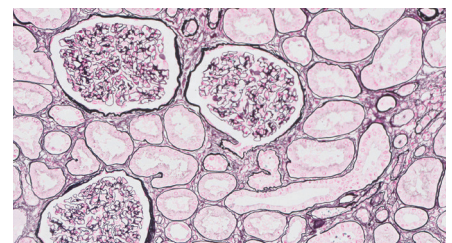
Gram Yellow



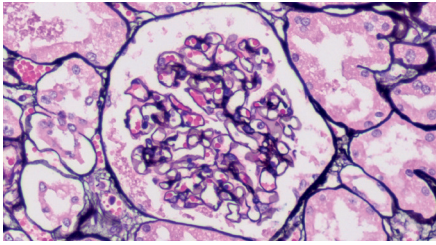
GMS



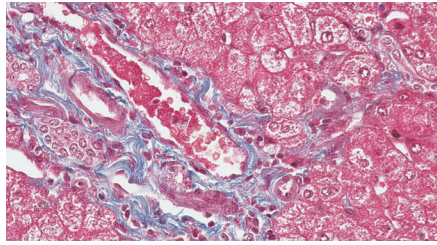
Iron



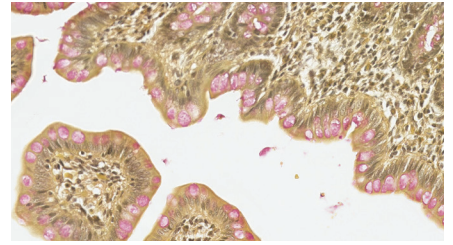
PAS-M



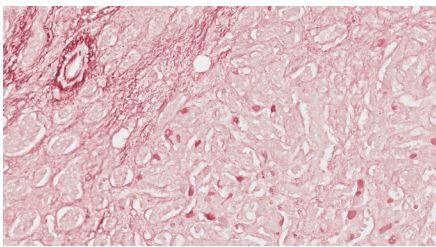
PAS-M H&E



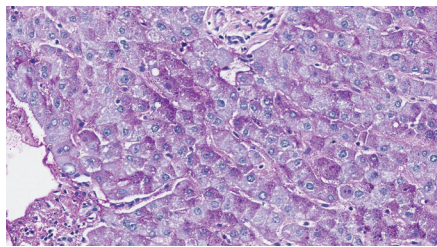
Masson's Trichrome



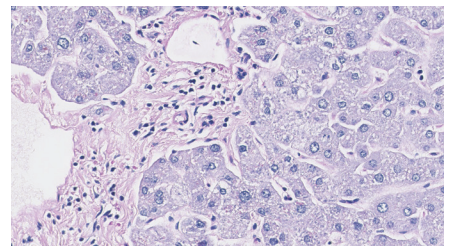
Mucicarmine



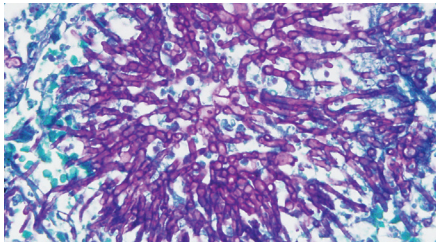
Orcein\*



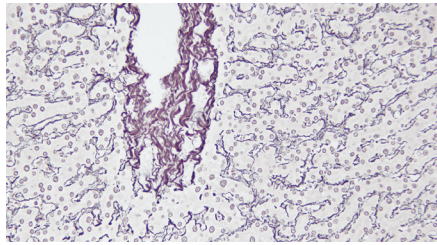
PAS



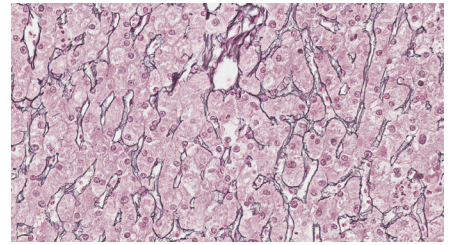
PAS with Alpha-Amylase



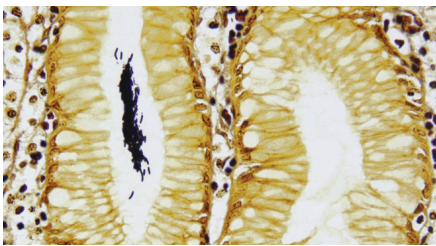
PAS Green



Reticulin/No Counterstain



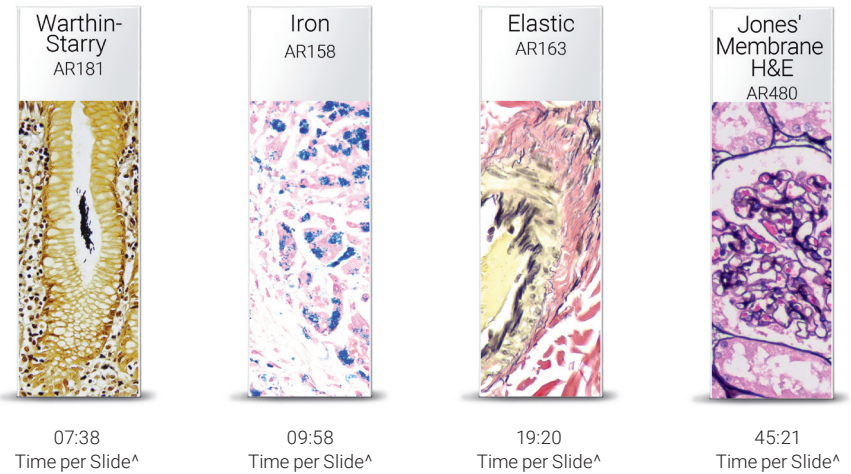
Reticulin/NFR



Warthin-Starry

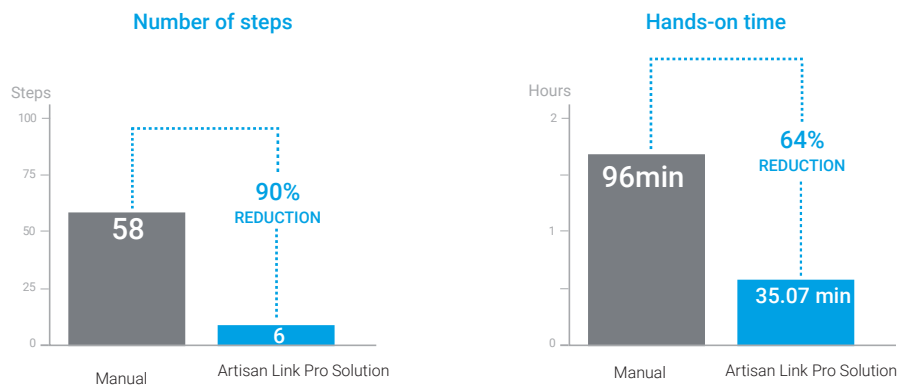
## Fast staining times with Artisan Link Pro

Artisan Link Pro also offers optional drying and deparaffinization allowing you to choose the process that is right for your lab.



## Significant time savings using Artisan Link Pro compared to a manual process<sup>1</sup>

Productivity was assessed by comparing five Artisan RTU stain kits\* with comparable manual procedures. The evaluation showed a significant reduction in number of steps and hands-on time comparing the manual process to the automated process with Artisan Link Pro.

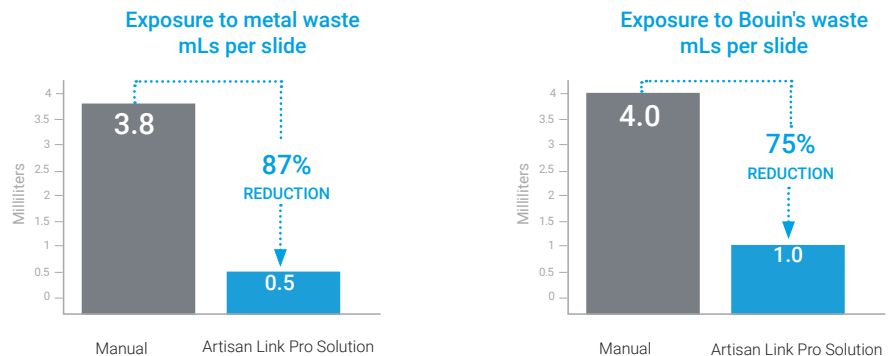


\*The Artisan RTU kits that were used for this study were AFB Green, GMS Eosin, Jones H&E, Jones Green, and AB/PAS-D

## Reduced waste and hazard exposure using Artisan Link Pro compared to a manual process<sup>2</sup>

Ten different manual procedures\*\* and the comparable Artisan RTU stain kits were used to evaluate a total of 952 slides across four different sites.

The evaluation showed that Artisan Link Pro can reduce reagent waste by as much as 75% compared to equivalent manual procedures.



\*\* The stains that were used for this evaluation study were Trichrome, reticul/NFR, AB/PAS/HEM, GMS, PAS, PAS-D, Iron, Jones, and Elastic.

## Consistent

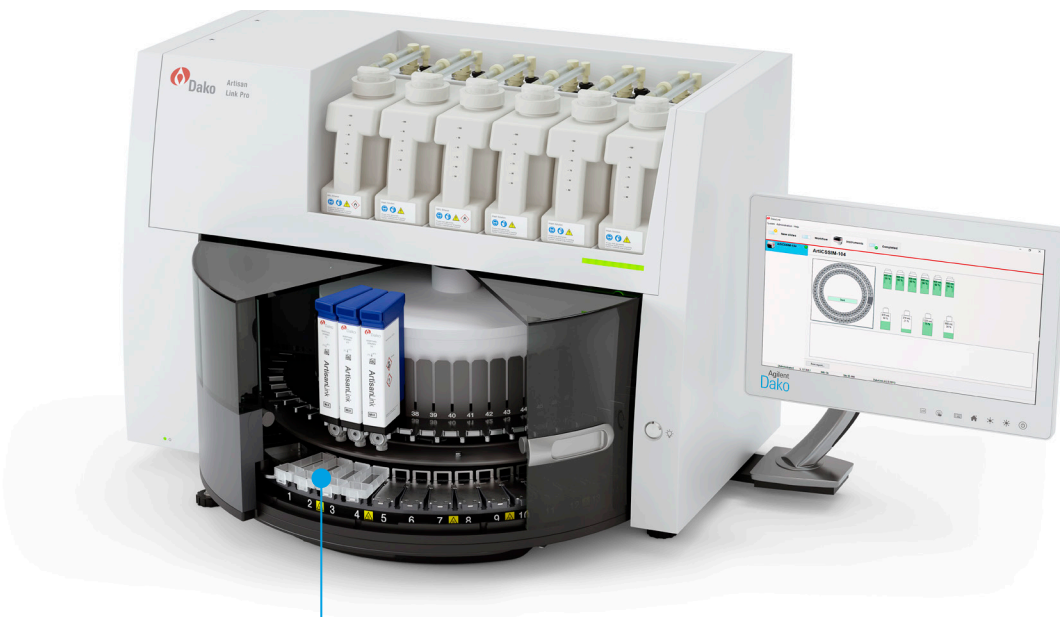
- High-quality standardized reagents dispensed with precision
- Pre-optimized and validated protocols for optimized results
- Full automation of drying, clearing and staining through to finished slides
- Individual slide heating
- Proven technology ensures reliable instrument performance

## Safety-focused

- Closed staining system and ready-to-use reagents packaged in closed cartridges
- Optimized ventilation removing unhealthy fumes
- No cap-removal needed eliminating exposure to hazardous chemicals
- Deparaffinization with automated Artisan Clearing Solution
- Unique waste separation into four separate disposal streams
- Full audit trail and reporting capabilities for accreditation and quality assurance

## Easy to use

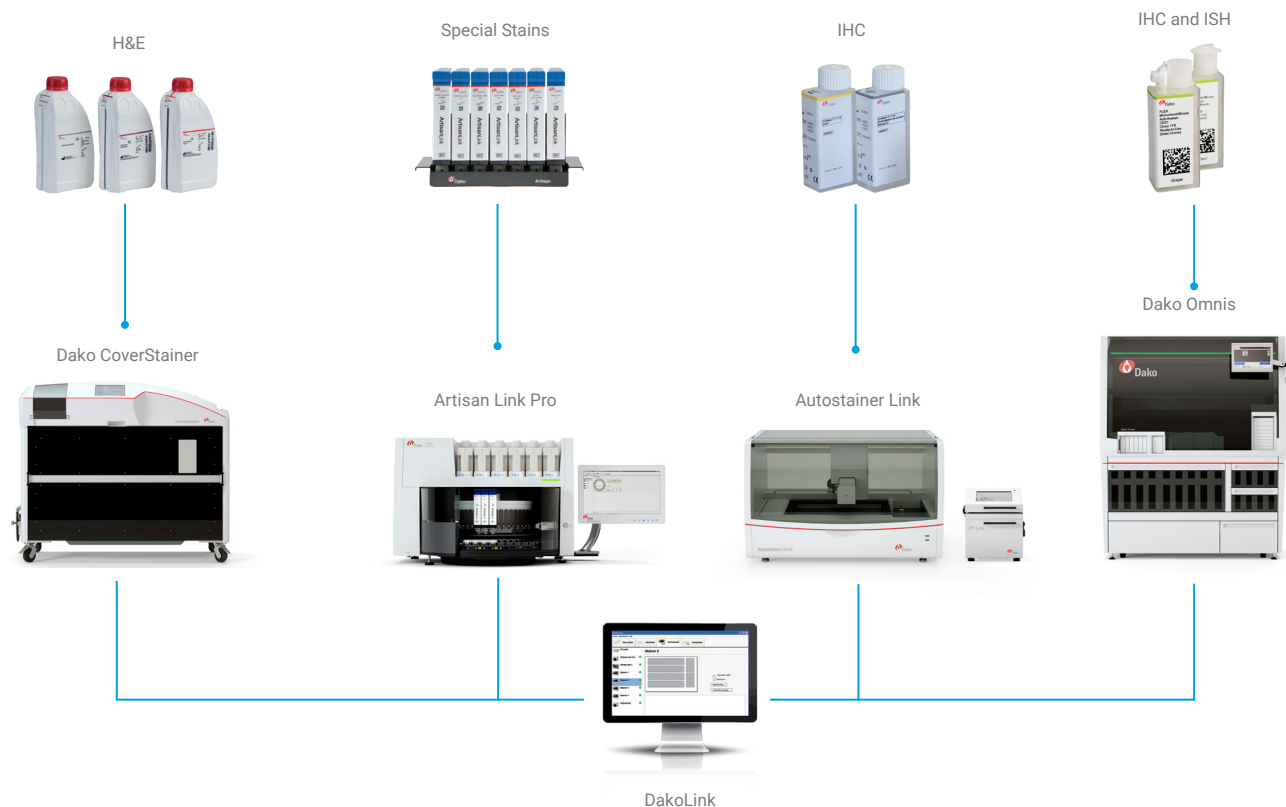
- Extensive menu of automated Ready-to-Use staining options
- Validated protocols that are editable for easy yet flexible results
- Optimized workflow enabled by 48-slide capacity
- Run multiple stains simultaneously to optimize productivity
- Short processing time and flexible loading options for fast results
- Intuitive operation via DakoLink software
- LIS and LAN connectivity
- Self contained slide positions mean that no decontamination is needed



Slide clips are placed on top of the slides to create an individual staining bath allowing fresh reagent to be dispensed onto each slide.

## Dako Staining Solutions for H&E, Special Stains, IHC and ISH

Integrated, innovative, and automated pathology solutions for complete diagnostic confidence.



Components	Description
Dimensions	22.5" (58 cm) H x 27.5" (70 cm) D x 31.0" (79 cm) W
Weight	Approx. 154.3 lbs (70 kg)
Total Slide capacity	48 slides
Total reagent capacity	50 reagent packs
Bulk fluid capacity	Six 1 L bottles. Optionally, one 1 L bottle can be replaced by one off-board 4 L bottle for diluted Artisan Wash Solution
Reagent waste capacity	Two 1.7 L bottles and two 4 L bottles
Packaging configuration	50 test pack: 200 dispense strokes, 100 test pack: 400 dispense strokes

<sup>^</sup>Time per slide varies depending on a number of factors, including but not limited to: placement on carousel, quantity of slides on instrument, staining combination and staining protocol. Using onboard drying and deparaffinization will add additional time to the throughput.

\* Gomori's Blue Trichrome and Orcein stain kits are not available in all markets. Please contact your local Agilent representative to learn more.

## References

1. Data on file
2. ArtisanLink vs. Manual Methods, 29017 04SEP10

D56848\_03

This information is subject to change without notice.

© Agilent Technologies, Inc. 2022  
Published in the USA, November 16, 2022  
29038 2022NOV14