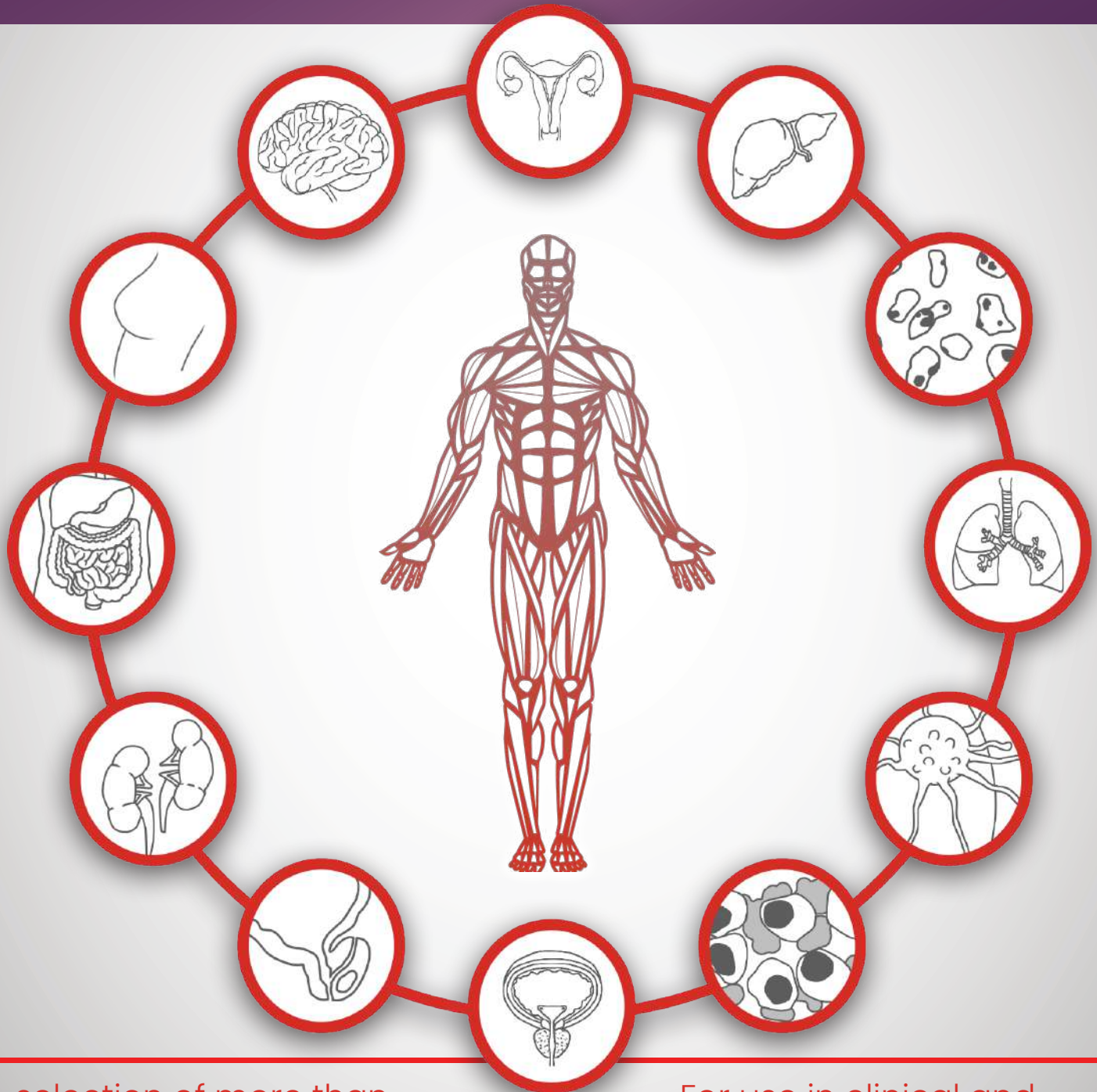


# ANTIBODIES BY APPLICATION

BIO•SB

High Affinity | High Sensitivity | High Specificity



A selection of more than 650 rabbit and mouse monoclonal antibodies.

For use in clinical and research applications.

# Antibodies by Application

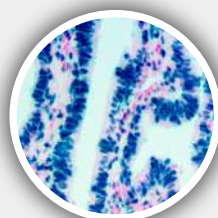
Breast Cancer Antibodies	
Actin, Smooth Muscle, MMab	BSB-15
Annexin VII, RMab	EP367
ARID1A, RMab	EP303
ATM, RMab	EP327
Aurora B, RMab	RM278
Bax, RMab	E63
Beta-Catenin, MMab	14
Beta-Catenin, RMab	RM276
CA 15-3, MMab	DF3
Cathepsin K, MMab	BSB-172
CA-125, MMab	OC125
Caldesmon, MMab	BSB-19
Calponin, MMab	BSB-20
CD142 / TF, MMab	BSB-143
CDK2, RMab	RBT-CDK2
CITED1, MMab	BSB-177
Claudin-1, RPab	Polyclonal
Claudin-7, RMab	EP399
Collagen IV, RMab	RBT-COL4
Collagen IV, MMab	CIV22
CXCL12 / SDF-1, MMab	BSB-165
CXCR4 / CD184 / Fusin, RMab	EP394
Cyclin D3, MMab	BSB-171
Cytokeratin 14, MMab	LL002
Cytokeratin 14, RMab	RM328
Cytokeratin 35BH11, MMab	35betaH11
Cytokeratin 8, RMab	EP17
Cytokeratin LMW/AE1, MMab	AE1
E-Cadherin, RMab	EP6
EGFR Phospho, RMab	EP11
EMA, MMab	E29
Estrogen Receptor, MMab	BSB-1
Estrogen Receptor, RMab	RBT11
Estrogen Receptor, RMab	RM292
Estrogen Receptor Alpha, RMab	EP1
EZH2, RMab	RBT-EZH2
GAB1 / GRB2-associated binding protein 1, MMab	BSB-155
GATA3, MMab	L50-823
GATA3, RMab	EP368
GCDFP-15, MMab	23A3
HER-2 neu, RMab	EP3
HER-2 neu, MMab	BSB-3

Breast Cancer Antibodies	
HER-2 neu, RMab	RBT-HER2
HER-2 neu Phospho, RMab	EP123
HER-3, RMab	RBT-HER3
HLA-DR Alpha Chain, RMab	EP96
Ki-67, RMab	EP5
Ki-67, RMab	RM360
Laminin-R / RPSA, MMab	BSB-144
Mammaglobin, RMab	EP249
Maspin, MMab	BSB-92
MCM3, RMab	EP202
MDR-1, MMab	JSB-1
MGMT / AGAT, RMab	EP337
MUC1, RMab	EP85
MUC1, RMab	RBT-MUC1
MUC1, MMab	BSB-44
Myosin Smooth Muscle Heavy Chain, MMab	BSB-17
Nestin, RMab	EP287
NGFR, MMab	BSB-18
NKX3.1, RMab	RM430
PI20 Catenin, RMab	EP66
p27, MMab	SX53G8
p53, MMab	DO7
p63, RMab	EP174
p63, MMab	4A4
PELPI, RMab	RBT-PELPI
PRAME, RMab	RBT-PRAME
Progesterone Receptor, RMab	EP2
Progesterone Receptor, MMab	BSB-2
Progesterone Receptor RBT22, RMab	RBT22
PTEN, RMab	RM265
PTEN, RMab	RBT-PTEN
TRPS1, RMab	EP392
TAG-72, MMab	BSB-21

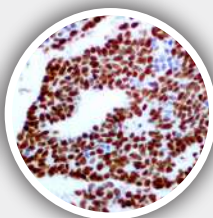
Breast Cancer Antibodies	
TDP-43 / TARDBP, MMab	BSB-166
Topoisomerase II alpha, RMab	RBT-Topo 2a

Alzheimer's Disease	
APOE4, MMab	BSB-170
pTau Phospho/Thr 181, MMab	BSB-176

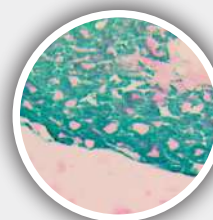
Carcinoma of Unknown Primary Site	
Cytokeratin 7, RMab	RM284
Cytokeratin 7, MMab	OV-TL 12/30
Cytokeratin 20, MMab	Ks20.8
Cytokeratin Cocktail, AE1 & AE3, MMab	AE1&AE3
Cytokeratin MNF116, MMab	MNF116
Cytokeratin Oscar, MMab	OSCAR
Napsin A, RMab	EP205
Napsin A, RMab	RBT-NAPSA
Napsin A, MMab	BSB-112



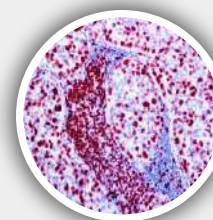
Estrogen Receptor



GATA-3



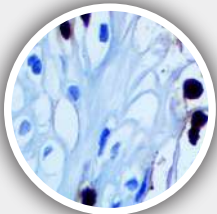
CK MNF116



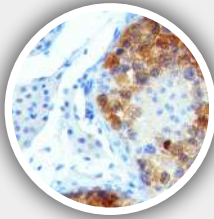
Ki-67

## Cervical Cancer Antibodies

Cyclin B1, RMab	RM281
Cyclin E1, RMab	EPI26
Cytokeratin 17, MMab	BSB-33
FGFR-3, MMab	BSB-150
FOXL2, RPab	Polyclonal
HIF-1a, RMab	EPI18
HPV, MMab	BSB-66
HPV16, MMab	CAMVIR-1
HSP70, RMab	RM432
MCM2, RMab	RBT-MCM2
MCM5, RMab	RBT-MCM5
p14 ARF/CDKN2A, RMab	RBT-p14
p16, MMab	16P04,JC2
p16, RMab	RBT-p16
p16, RMab	RM267
Stathmin, RMab	EP247
Topoisomerase IIa, RMab	RBT-Topo2a
VEGFA, RMab	RBT-VEGFA



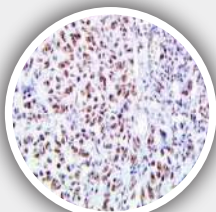
HPV



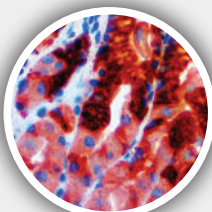
p16

## Endometrial Cancer

bcl-2, RMab	EP36
bcl-2, MMab	BSB-5
hPL, RPab	Polyclonal
Inhibin Alpha, MMab	R1
Inhibin Alpha, RMab	EP378
LIN28, RMab	EPI50
p21, MMab	DCS-60.2
PELP1, RMab	RBT-PELP1
Retinoblastoma, MMab	IF8



PELP1



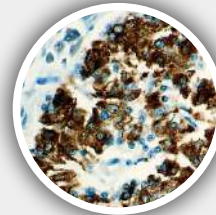
MUC5AC

## Colon & G.I. Antibodies

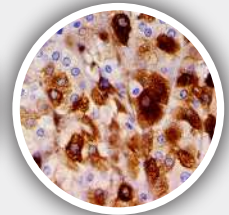
ATM, RMab	EP327
Beta-Catenin, RMab	RM276
Beta-Catenin, MMab	I4
BRAF V600E, RMab	RM8
CA 19-9, MMab	I21SLE
Cadherin 17/ Li-Cadherin, RMab	EP86
CD44, MMab	BSB-12
CD45RA, MMab	4KB5
CD73 / NT5E, RMab	RM431
CDX2, RMab	RBT-CDX2
CDX2, RMab	EP25
CEA, MMab	BSB-13
CEA, RPab	Polyclonal
CEACAM7, MMab	BSB-168
Claudin-1, RPab	Polyclonal
COX-2, RMab	RBT-COX2
Cytokeratin 8 & 18, RMab	B22.1/B23.1
Cytokeratin 18, RMab	EP30
Cytokeratin 19, MMab	BSB-34
Cytokeratin 19, RMab	RM364
Cytokeratin 20, RMab	EP23
Cytokeratin 20, MMab	Ks20.8
Cytokeratin LMW CAM5.2, MMab	CAM5.2
Gastrin, RPab	Polyclonal
GLUT1, RMab	RBT- GLUT1
ICOS / CD278, RMab	RM417
IgG4, MMab	BSB-96
Lamin-B1, RMab	RBT-LMNBI
MLH1, MMab	G168-728
MLH1, RMab	RBT-MLH1
MSH2, MMab	BSB-147
MSH2, RMab	RBT-MSH2
MSH6, MMab	44
MSH6, RMab	EP49
MUC1, MMab	BSB-44
MUC1, RMab	RBT-MUC1
MUC2, MMab	BSB-45
MUC2, RMab	EP187
MUC5AC, MMab	CLH2
MUC6, MMab	CLH5
p14 ARF/CDKN2A, RMab	RBT-p14
PMS2, RMab	RBT-PMS2
PMS2, RMab	EP51
SATB2, RMab	EP281

## Colon & G.I. Antibodies

SOX-9, RMab	EP317
TIM-3 / HAVCR2 / CD366, MMab	BSB-163
TFF3, MMab	BSB-181
Villin, MMab	CWWB1
Villin, RMab	EPI63



Insulin



Osteonectin /  
SPARC

## Gall Bladder & Pancreatic Cancer Antibodies

Collagen IV, RMab	RBT-COL4
Collagen IV, MMab	CIV22
DDR1, MMab	BSB-173
Glucagon, RMab	EP74
Glucagon, MMab	BSB-111
IgG4, RMab	EPI38
IgG4, MMab	BSB-96
IMP-3/IGF2BP3, RMab	EP286
Insulin, MMab	BSB-42
Islet-1/ISL1, RMab	EP283
LRG1, MMab	BSB-174
MUC4, MMab	8G7
Osteonectin/SPARC, MMab	BSB-93
PDX1, RMab	EPI39
S100P, RMab	RBT-S100P
S100P, RMab	EPI86
SMAD4/DPC4, MMab	BSB-63
SMAD4/DPC4, RMab	RBT-SMAD4
Somatostatin, MMab	BSB-113

### Germ Cell Tumor Antibodies

Alpha-Fetoprotein, MMab	BSB-23
LIN28, RMab	EP150
MAGEC2, RMab	EP405
Nanog, RMab	EP225
p57, MMab	Kp10
PLAP, MMab	BSB-47
SALL4, RMab	EP299
SALL4, MMab	6E3
SF-1 / Steroidogenic Factor 1, MMab	BSB-149
SOX-2, RMab	EP103
SOX-2, RMab	RM427

### GIST Antibodies

CD117, RMab	EP10
CD117, RMab	RM359
DOG-1, RMab	RBT-DOG1
DOG-1, RMab	EP332

### Hematopoietic Antibodies

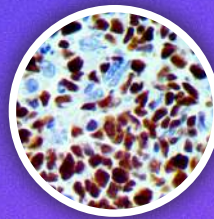
CD41/Integrin alpha IIB, RMab	EP178
Clusterin/Apoloprotein J, RMab	RM437

### Immunotherapy Antibodies

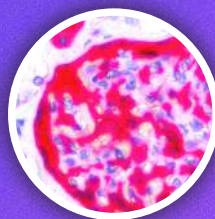
B7H3 / CD276, RMab	RBT-B7H3
CTLA-4 / CD152, MMab	BSB-88
CTLA-4 / CD152, RMab	RBT-CTLA4
FOXP3, RPab	Polyclonal
ICOS / CD178, RMab	RM417
IFN- $\alpha$ , MMab	BSB-158
IFN- $\gamma$ , MMab	BSB-161
LAG-3/CD223, RMAB	EP294
OX-40/CD134, MMab	BSB-90
PD-1/CD279, MMab	NAT-105
PD-1/CD279, RMab	EP239
PD-L1/CD274, RMab	RBT-PDL1
PD-L1/CD274, RMab	28-8
TIGIT, MMab	BSB-152
TIM-3 / HAVCR2 / CD366, MMab	BSB-163

### Hodgkin's & NHB Lymphoma Antibodies

bcl-6, MMab	BSB-26
bcl-6, RMab	EP278
bcl-6, RMab	RBT-bcl6
BOB-1, RMab	RBT-BOB1
CD3, RMab	RBT-CD3
CD10, RMab	EP195
CD10, RMab	RBT-CD10
CD10, MMab	56C6
CD15, MMab	BSB-119
CD19, MMab	BSB-97
CD20, MMab	L26
CD23, MMab	1B12
CD23, RMab	EP75



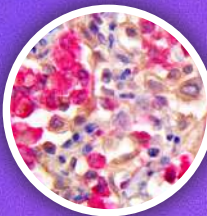
bcl-6



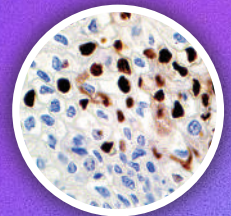
CD10

### Hodgkin's & NHB Lymphoma Antibodies

CD30, MMab	Ber-H2
CD57, MMab	BSB-10
CD137 / TNFRSF9, MMab	BSB-159
Fascin, MMab	BSB-36
FOXP3, RMab	EP340
Granzyme B, RPab	Polyclonal
MUM-1, RMab	EP190
OCT-2, RMab	EP115
PAX-5, RMab	RBT-PAX5
PD-L1/CD274, RMab	28-8
PD-L1/CD274, RMab	RBT-PDL1
TIA-1, RMab	RBT-TIA1
TIA-1, MMab	TIA-1



SARS-CoV-2 & CD163 (Dual IHC)



HPV

### Infectious Disease Antibodies

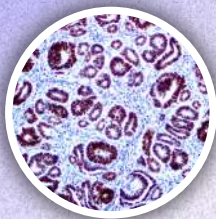
Aspergillus, RMab	RBT-A.fumi
ACE2, MMab	BSB-135
Adenovirus, MMab	20/11 & 2/6
CD147, MMab	BSB-137
Candida Albicans, RMab	RBT-C.alb
Cytomegalovirus, MMab	8B1.2, 1G5.2 & 2D4.2
Epstein Barr Virus, LMP-1, MMab	CS1-4
Factor H / Complement Factor H, MMab	BSB-164
Helicobacter pylori, MMab	BSB-37
Helicobacter pylori, RPab	Polyclonal
Helicobacter pylori, RMab	EP279
Hepatitis B Virus Core Antigen, RPab	Polyclonal
Hepatitis B Virus Surface Antigen, MMab	A10F1
Herpes Simplex Virus 1, RPab	Polyclonal
Herpes Simplex Virus 2, RPab	Polyclonal
Herpes Simplex Virus 1, MMab	10A3
Herpes Simplex Virus I & II, MMab	10A3/BSB-116
Herpes Simplex Virus I & II, RPab	Polyclonal

### Infectious Disease Antibodies

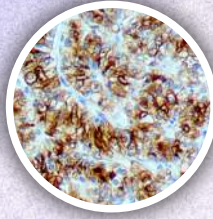
Herpes Simplex Virus II, MMab	BSB-116
HHV-8, MMab	13B10
HHV-8, RMab	RBT-HHV8
HPV, MMab	BSB-66
HPV16, MMab	CAMVIR-1
IFN- $\alpha$ , MMab	BSB-158
IFN- $\gamma$ , MMab	BSB-161
Mycobacterium Tuberculosis	Polyclonal
Parvovirus, MMab	R92F6
Pneumocystis jirovecii, MMab	3F6
SARS-CoV-2, MMab	BSB-134
SV40, MMab	Pab101
TMPRSS2, MMab	BSB-136
Toxoplasma gondii, RPab	Polyclonal
Treponema pallidum, RPab	Polyclonal
Varicella Zoster Virus, MMab	SG1, SG1-1, SG2-2E6, SG3, SG4, NCP-1 & IE-62

## Kidney Cancer & Urothelial Antibodies

Amyloid A, RMab	EP335
Carbonic Anhydrase 9, RMab	EP161
CD147, MMab	BSB-137
c-Met/HGFR, RMab	RBT-c-Met/HGFR
FGFR-3, MMab	BSB-150
Ksp-Cadherin, MMab	4H6/F9
Parvalbumin, RMab	EP300
PAX-2, RMab	EP235
PAX-8, RMab	ZR-1
PAX-8, RMab	RM436
PLA2R1, MMab	BSB-129
Renal Cell Carcinoma, MMab	PN-15
S100A1, RMab	EP184
SDHB, MMab	BSB-131
STAR, RMab	EP226
Survivin, RMab	EP119
TFE3, RMab	EP285
Uroplakin III, RPab	Polyclonal
Uroplakin III, RMab	EP321
WT1, MMab	6F-H2



PAX-2



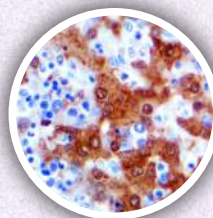
Renal Cell Carcinoma

## Liver Cancer Antibodies

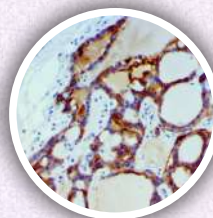
Alpha-Fetoprotein, MMab	BSB-23
Arginase-1, RMab	EP261
CEA, RPab	Polyclonal
CEA, MMab	BSB-13
Glutamine Synthase, MMab	GS-6
Glypican-3, MMab	1G12
HEG1, MMab	SKM9-2
Hepatocyte Specific Antigen / Hep Par 1, MMab	OCHIE5
Prealbumin / Transthyretin, MMab	BSB-125

## Leukemia/Histocytic Antibodies

A-1-Antichymotrypsin, RMab	EP384
Alpha1-Antichymotrypsin, RPab	Polyclonal
Alpha-1-Antitrypsin, RPab	Polyclonal
Annexin A1, MMab	BSB-95
c-Myc, RMab	RBT-CMYC
c-Myc, MMab	9E10
c-Myc, RMab	EP121
Caspase-3, RMab	RM250
CD1a, RMab	EP80
CD5, RMab	RM314
CD5, RMab	RBT-CD5
CD7, MMab	LP15
CD8, RMab	EP334
CD8, MMab	C8/144B
CD11b, RMab	EP45
CD11c, RMab	EP157
CD13, MMab	38C12
CD14, MMab	7
CD16, RMab	EP364
CD25, MMab	4C9
CD25, RMab	RBT-CD25
CD33, RMab	RBT-CD33
CD34, MMab	QBEnd/10
CD34, RMab	EP88
CD38, MMab	SPC32
CD42b, RMab	EP409
CD61, MMab	2f2
CD61, RMab	EP65
CD68, MMab	BSB-8
CD68, MMab	KP1
CD71, MMab	10F11
CD99, MMab	BSB-9
CD103/ITGAE, RMab	EP206
CD163, MMab	10D6
Factor XIIIa, RMab	EP292



Arginase-1



Glypican-3

## Leukemia/Histocytic Antibodies

Glycophorin A, MMab	GA-R2
Hemaglobin A, RMab	EP124
IDH R132H, RMab	RBT-IDH1
IDH R132H, MMab	IHC132
IgA, MMab	BSB-39
IgA, RPab	polyclonal
IgG, MMab	BSB-40
IgG, RPab	polyclonal
IgM, MMab	BSB-41
Langerin, MMab	I2D6
LEF1, RMab	RBT-LEF1
LEF-1, RMab	EP310
Lysozyme, MMab	Polyclonal
Lysozyme, RMab	EP134
Macrophage/HAM-56, MMab	HAM-56
MNDA, MMab	BSB-157
Musashi 2, RMab	RM422
Myeloperoxidase, RPab	Polyclonal
Myeloperoxidase, RMab	EP151
Myeloperoxidase/ MPO, MMab	BSB-180
NPM1/B23, MMab	BSB-124
PDGFR-B, RMab	RBT-PDGFRB
PU.1, RMab	EP18
Spectrin, MMab	RBC2/3D5
T-Bet/TBX-21, RMab	EP263
TCL-1, RMab	EP105
TCR Alpha, MMab	BSB-126
TCR Beta, MMab	BSB-117
TCR Delta, MMab	BSB-127
TdT, MMab	Polyclonal
TdT, RMab	RBT-TdT
TdT, RMab	EP266
TIA-1, MMab	TIA-1
TIM-3 / HAVCR2 / CD366, MMab	BSB-163
TRAcP, MMab	9C5
Zap-70, MMab	2F3.2

<b>Lung Cancer Antibodies</b>	
ALK-1/CD246, RMab	EP302
ALK-1/CD246, RMab	RBT-ALK1
BAP1, MMab	BSB-109
BG8 Lewis Y, MMab	F3
BRG-1 / SMARCA4, MMab	BSB-154
c-Met / HGFR, RMab	EPI454Y
c-Met / HGFR, RMab	RBT-cMet/ HGFR
CD142 / TF / Coagulation Factor III . Thromboplastin, MMab	BSB-143
CD73 / NT5E, RMab	RM431
CEACAM7, MMab	BSB-168
Claudin-4, RMab	EP417
CXCL12 / SDF-1, MMab	BSB-165
CXCR5 / CD185, RPab	Polyclonal
Cytokeratin 7, MMab	OV-TL 12/30
Cytokeratin 7, RMab	RM284
Cytokeratin AE1/AE3, MMab	AE1/AE3
DDR1, MMab	BSB-173
Desmoglein-3, RMab	EP306

<b>Lymphoma Antibodies</b>	
ALK-1, RMab	RBT-ALK1
bcl-2, MMab	BSB-5
bcl-6, RMab	EP278
bcl-6, RMab	RBT-bcl6
bcl-6, MMab	BSB-26
bcl-10, MMab	BSB-22
c-Myc, RMab	EPI21
c-Myc, RMab	9E10
c-Myc, RMab	RBT-cMyc
CD2, MMab	AB75
CD3 Epsilon, RMab	RBT-CD3e
CD4, RMab	RBT-CD4
CD4, MMab	BSB-179
CD5, RMab	RBT-CD5
CD5, RMab	RM314
CD6, MMab	BSB-54
CD7, RMab	EPI32
CD7, MMab	LPI5
CD8, MMab	C8/144B
CD10, MMab	56C6
CD10, MMab	RBT-CD10
CD14, RMab	EPI28
CD14, RMab	7
CD21, RMab	EP64
CD25, RMab	RBT-CD25

<b>Lung Cancer Antibodies</b>	
EGFR, MMab	3IG7
ERCC1, RMab	EP219
Factor H, MMab	BSB-164
GLUT-1, RMab	EPI41
GLUT-1, RMab	RBT-GLUT1
INSM1, MMab	BSB-123
INSM1, RMab	RBT-INSM1
Lamin-B1, RMab	RBT-LMNB1
Musashi 2, RMab	RM422
Napsin A, MMab	BSB-112
Napsin A, RMab	RBT-NAPSA
pan-TRK, RMab	RM423
pan-TRK, RMab	RBT-TRK
PGP 9.5, MMab	BSB-46
Pygopus 2 / Pygo 2, MMab	BSB-156
ROS-1, RMab	EP282
Somatostatin Receptor 2, RMab	EPI49
SOX-2, RMab	EPI03
SOX-2, RMab	RM427
Surfactant Protein D / SP-D, MMab	BSB-162
TTF-1, MMab	8G7G3/1
YAPI, MMab	BSB-146

<b>Melanoma &amp; Skin Cancer Antibodies</b>	
Adipophilin/ADRP, MMab	BSB-91
CD63, MMab	NKi/C3
Cytokeratin 5 & 6, MMab	D5 & 16B4
Cytokeratin 14, RMab	RM328
Cytokeratin 14, MMab	LL002
Cytokeratin AE1/AE3, MMab	AE1/AE3
Cytokeratin MNF116, MMab	MNF116
HSP70, RMab	RM432
MART-1 / Melan-A, MMab	M2-7C10
MART-1 / Melan-A, MMab	A103
Melanoma / KBA.62, MMab	KBA.62
Melanoma / PNL2, MMab	PNL2
Melanoma Cocktail, MMab	HMB-45, A103 & BSB-6
Melanosome J HMB45, MMab	HMB-45
MiTF, MMab	C5 & D5
MLH1, MMab	G168-728

<b>Lymphoma Antibodies</b>	
CD25, RMab	4C9
CD35, MMab	RLB25
CD38, RMab	EPI35
CD38, MMab	SPC32
CD43, MMab	MT1
CD45R, MMab	MB1
CD45RO, MMab	UCHL-1
CD74, MMab	LN2
CD75, MMab	LN1
CD79a, MMab	JCB117
CD123 / IL-3Ra, MMab	BSB-59
CD137 / TNFRSF9, MMab	BSB-159
CD138, MMab	B-A38
CD138, RMab	EP201
CD138, RMab	RBT-CD138
CXCR5 / CD185, RPab	Polyclonal
Cyclin D1, RMab	RBT-14
Cyclin D1, RMab	RM241
FOXPI, RMab	EPI37
Granzyme B, RMab	EP230
Granzyme B, RPab	Polyclonal
hGAL / GCET, RMab	EP316
Histone H3 Phospho, RMab	EP233
IgD, RPab	Polyclonal
IgD, RMab	EPI73
Kappa Light Chains, MMab	BSB-58
Lambda, MMab	BSB-16
Lambda, RPab	Polyclonal
LMO2, RMab	RBT-LMO2
MNDA, MMab	BSB-157
NPM1 / B23, MMab	BSB-124
NUTM1, RMab	RBT-NUTM1
PD-1 / CD279, MMab	NAT-105
PD-1 / CD279, RMab	EP239
PD-L1 / CD271, RMab	28-8
PD-L1/CD271, RMab	RBT-PDL1
PU.1, RMab	EPI8
SOX-11, MMab	CL0142
SOX-11, MMab	BSB-167
TCR Alpha, MMab	BSB-126
TCR Delta, MMab	BSB-127
H3K27Me3, RMab	RBT-H3k27Me3

## Melanoma & Skin Cancer Antibodies

MLH1, RMab	RBT-MLH1
MTAP, RMab	RBT-MTAP
NRAS (Q61R), RMab	RBT-NRAS
PMS2, RMab	RBT-PMS2
PRAME, RMab	RBT-PRAME
S-100, MMab	4C4.9
S100B, RMab	EP32
SOX-10, RMab	EP268
SOX-10, MMab	BSB-62
TDP-43 / TARDBP, MMab	BSB-166
TIGIT, MMab	BSB-152
TORC3/CRTC3, MMab	BSB-175
H3K27Me3, RMab	RBT-H3k27Me3
Tyrosinase, MMab	BSB-6

## Mesothelioma Antibodies

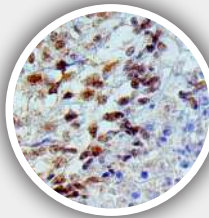
BAP1, MMab	BSB-109
Calretinin, RMab	RM324
Calretinin, RMab	RBT-CALB2
Caveolin 1, RMab	EP353
Claudin-4, RMab	EP417
Cytokeratin 5 & 6, MMab	D5 & 16B4
Cytokeratin 5 & 6, RMab	RM341
EpCAM / Epithelial Specific Antigen, MMab	Ber-EP4
EpCAM / Epithelial Specific Antigen, MMab	MOC-31
HEG1, RMab	SKM9-2
Mesothelial Cell, MMab	HBME-1
MTAP, RMab	RBT-MTAP

## Ovarian Cancer Antibodies

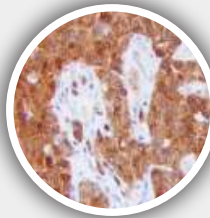
ARID1A, RMab	EP303
CA-125, MMab	OC125
hCG, MMab	BSB-38
HE4, RMab	EP370
hPL, RMab	EP241
hPL, RPab	Polyclonal
OCT4/POU5F1, RMab	RBT- OCT4
LIN28, RMab	EPI50
Nanog, RMab	EP225
SF-1 / Steroidogenic Factor 1, MMab	BSB-149
STAR, RMab	EP226
Surfactant Protein D / SP-D, MMab	BSB-162

## Neural & Neuroendocrine Cancer Antibodies

Alpha Synuclein, MMab	BSB-114
Amyloid Beta, RMab	RBT-A4
APOE4, MMab	BSB-170
ATRX, MMab	BSB-108
ATRX, RMab	RBT-ATRX
Brachyury, RMab	RBT-TBXT
Calcitonin, RMab	EP92
Calcitonin, RMab	RBT-Calcitonin
CD56, MMab	I23C3.D5
Chromogranin A, MMab	LK2H10
CXCR4 / CD184 / Fusin, RMab	EP394
GFAP, MMab	G-A-5
GFAP, RMab	RM246
GH, MMab	BSB-99



BAP1



MTAP

## Pituitary Antibodies

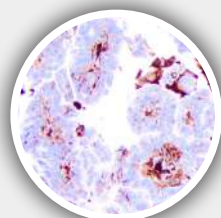
ACTH, MMab	BSB-25
FSH, RMab	EP257
FSH, MMab	BSB-55
GH, MMab	BSB-99
GH, RPab	Polyclonal
HMG2, RMab	EP398
Luteinizing Hormone, MMab	BSB-53
Prolactin, MMab	PRL02
SDHB, MMab	BSB-131
STAR, RMab	EP226
TSH, MMab	BSB-56

## Neural & Neuroendocrine Cancer Antibodies

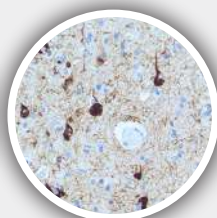
Glucagon, MMab	BSB-111
IDH1 R132H, MMab	IHC132
IDH1 R132H, RMab	RBT-IDH1
INI-1, RMab	RBT-INI1
INI-1, MMab	25
INSM1, MMab	BSB-123
INSM1, RMab	RBT-INSM1
MGMT / AGAT, RMab	EP337
Myelin Basic Protein, RPab	Polyclonal
Myelin Basic Protein, RMab	EP207
NeuN, MMab	A60
NeuN, RMab	RBT-NeuN
Neurofilament, MMab	2F11
NSE, MMab	BSB-94
OLIG2, RMab	EPI12
OLIG2, RMab	RBT-OLIG2
pan-TRK, RMab	RM423
panTRK, RMab	RBT-TRK
PAX-7, RMab	BSB-145
PHOX2B, RMab	EP312
Prealbumin/ Transthyretin, MMab	BSB-125

## Neural & Neuroendocrine Cancer Antibodies

Prolactin, RMab	EP193
Prolactin, MMab	PRL02
pTau Phospho Thr 181, MMab	BSB-176
Pygopus 2 / Pygo 2, MMab	BSB-156
SDHB, MMab	BSB-131
Somatostatin, MMab	BSB-113
Somatostatin Receptor 2, RMab	EPI49
SOX-2, RMab	RM427
Synaptophysin, RMab	EPI58
Synaptophysin, RMab	RBT-Synaptophysin
Synaptophysin, RPab	Polyclonal
Tau, MMab	BSB-115
H3K27Me3, RMab	RBT-H3K27Me3
TSH, RMab	EP254
TSH, MMab	BSB-56
ZFAND3, MMab	BSB-169



APOE4



pTau Phospho

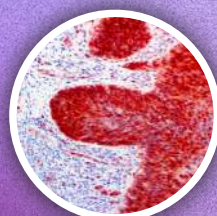
<b>Prostate Cancer Antibodies</b>	
AMACR / P504S, RMab	13H4
Androgen Receptor, MMab	BSB-4
Annexin VII, RMab	EP367
Aurora B, RMab	RM278
Caspase-3, RMab	RM250
Cytokeratin HMW / 34BE12, MMab	34BetaE12
NKX3.1, RMab	EP356
NKX3.1, RMab	RM430
p40, RMab	ZR8
p63, RMab	EPI74
p63, MMab	4A4
Prostein / P501S, RMab	EP381
PSA, MMab	BSB-7
PSA, RMab	RBT-PSA
PSAP, MMab	PASE/4LJ
PSMA, RMab	EPI92
PSP94 / MSMB, RMab	EP203

<b>Thyroid &amp; Parathyroid Antibodies</b>	
Calcitonin, RPab	Polyclonal
Calcitonin, RMab	RBT-Calcitonin
Cytokeratin 19, RMab	RM364
Cytokeratin 19, MMab	BSB-34
Galectin-3, MMab	9C4
HMGA2, RMab	EP398
panTRK, RMab	RBT-TRK
panTRK, RMab	RM423
Parafibromin, MMab	BSB-50
Parathyroid (PTH), MMab	BSB-24
Thyroglobulin, MMab	BSB-49
Thyroglobulin, MMab	2H11 & 6E1
Thyroid Peroxidase, RMab	EPI59
Trop-2 / EGP-1, MMab	BSB-148

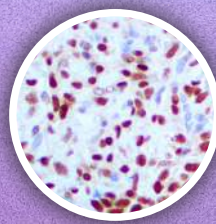
<b>Sarcoma &amp; Soft Tissue Antibodies</b>	
Actin Muscle Specific, MMab	HHF35
BCOR, MMab	BSB-128
CD13, MMab	38C12
CD35, RMab	EPI97
CD35, MMab	RLB25
CD99, MMab	BSB-9
CDK4, RMab	EPI80
Desmin, MMab	D33
Fumarate Hydratase, MMab	BSB-151
HHV-8, MMab	13B10
HHV-8, RMab	RBT-HHV8
INI-1, MMab	25
INI-1, RMab	RBT-INI1
MDM2, MMab	BSB-64
MyoD1, RMab	RBT-MyoD1
MyoD1, RMab	EP212
Myogenin, MMab	F5D
Myoglobin, MMab	BSB-104
Myoglobin, RMab	EP87
NKX2.2, RMab	EP336
NUT / NUTM1, RMab	RBT-NUTM1
PAX-7, MMab	BSB-145
SS18-SSX, RMab	RBT-SS18-SSX
STAT6, RMab	EP325
STAT6, RMab	RM473
TLE1, RMab	RBT-TLE1
TLE-1, MMab	1F5
TLE-1, MMab	BSB-142
Vimentin, RMab	EP21
Vimentin, MMab	V9

<b>Rejection &amp; Autoimmunity Antibodies</b>	
C3d, RPab	Polyclonal
C4d, RMab	EP272
IL-1a, MMab	BSB-138
IL-1b, MMab	BSB-139
IL-6, MMab	BSB-140
iNOS, RMab	RBT-iNOS
Perforin, MMab	5B10
PLA2R1, MMab	BSB-129
TNFA-IP2, MMab	BSB-141

<b>Undifferentiated Tumor Antibodies</b>	
CD45, MMab	2B11 & PD7/26
Cytokeratin AE1/AE3, MMab	AE1 & AE3
PLAP, RMab	EPI94
PLAP, MMab	BSB-47
S-100, MMab	4C4.9
SOX-10, RMab	EP268
SOX-10, MMab	BSB-62
Synaptophysin, RPab	Polyclonal
Vimentin, MMab	V9
Synaptophysin, RMab	RBT-Synaptophysin



CDK4, RMab



STAT6

Bio SB performs R&D, production, distribution of antibodies and detection systems for immunohistochemistry (IHC), including environmentally friendly ancillaries, unique IVD validated antibodies, detection systems and equipment. Our portfolio includes products for immunohistochemistry (IHC) and Immunofluorescence (IF) technologies that meet the highest international standards for applications in molecular pathology, cancer research, microbiology, immunology and genetics. Bio SB manufactures and develops products in accordance with FDA QSR 21 CFR Part 820 cGMP, CE IVD and ISO13485 certifications.